

# ALTERNATOR

## G TYPE up to 100 Amps



The G type alternator has a specially wound stator to achieve high power output in a small, low weight package. High current diodes are used in the rectifier and internal fans provide forced air cooling. The output is controlled by a regulator inside the alternator. The units are assembled with stiff brush springs and extra flexible wire to connect the stator to the rectifier. The stator is pegged to the body and all screws are locked. High quality bearings are used to enable the alternators to run at high speeds (up to 18,000 rpm). The standard mounting method is intended for a belt drive, but the alternator may also be driven directly, if required.

Please request our installation datasheet for further details.

### Electrical

- Output voltage 13.5V DC
- Nominal output current
 

High	100A	(cut in speed 2100rpm)
Standard	55A	(cut in speed 1200rpm)

A detailed performance chart is shown on the next page

### Mechanical

- Aluminium alloy body
- Maximum speed 18000rpm
- Clockwise or anti clockwise rotation available
- Weight <3.2kg
- Potted elastomer boot for strain relief of cable (where fitted)

Design and manufacture is in-house, so if our existing designs do not suit your application, we can provide cost effective customised parts to suit even the most demanding application.

For example:

- Through bored mounting holes
- High accuracy machining of mounting flanges
- Alternative cable entry locations
- Alternative connectors
- The regulator/rectifier unit may be rotated through 90°, 180° or 270°

Please contact our technical consultancy service who will be pleased to help.

### Connection Definition

- 22AWG cable (where fitted)
- Cable length is shown on the order details but any length is available on request
- Various automotive and military standard connectors are available
- Positive power output M6 stud
- Ground connection for power and regulator is through the case. Ensure that the case has a high current, low resistance connection to vehicle ground.
- Cable connection
 

Green wire	Pin A	Pin 1	Ignition
Red wire	Pin B	Pin 2	Sense
White wire	Pin C	Pin 3	Lamp
- Connections for the integral connector (where fitted) are shown on the drawings

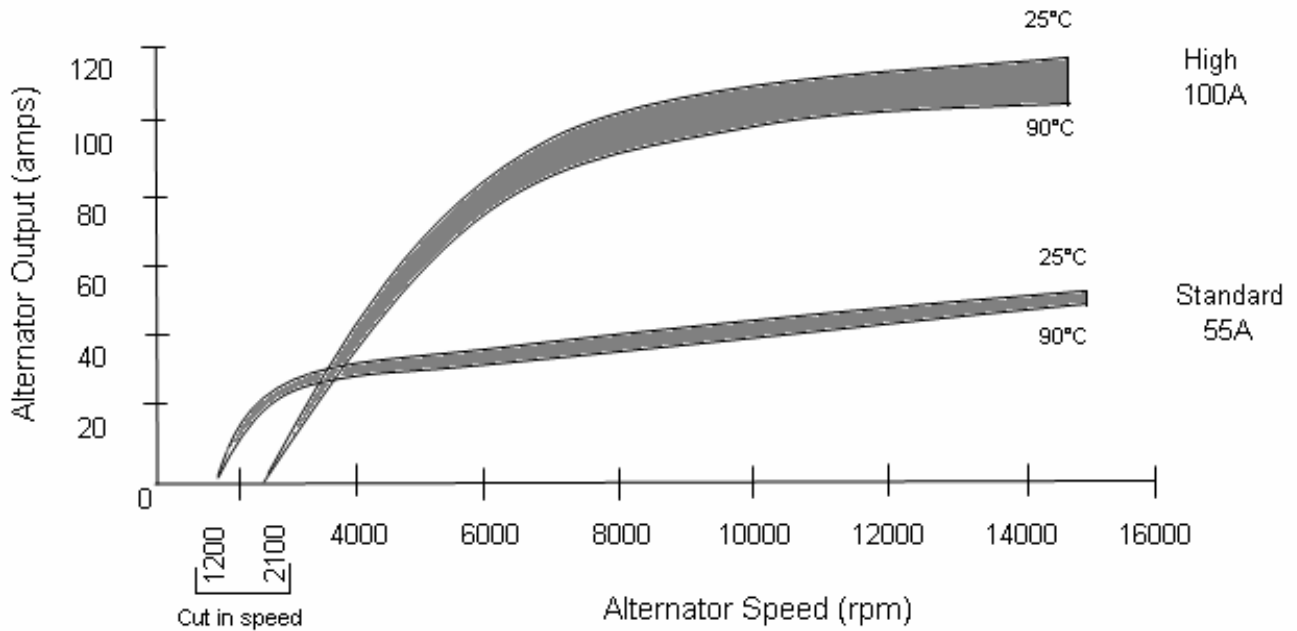
### Environmental

- Splash resistant to standard motorsport fluids
- Viton jacketed cable
- Continuous ambient operating temperature -30 to +90°C
- Maximum ambient temperature 110°C short term, providing the following temperatures are not exceeded:

Stator	200°C
Diodes	180°C
Regulator	115°C
Bearings	150°C

# ALTERNATOR

## G TYPE up to 100 Amps

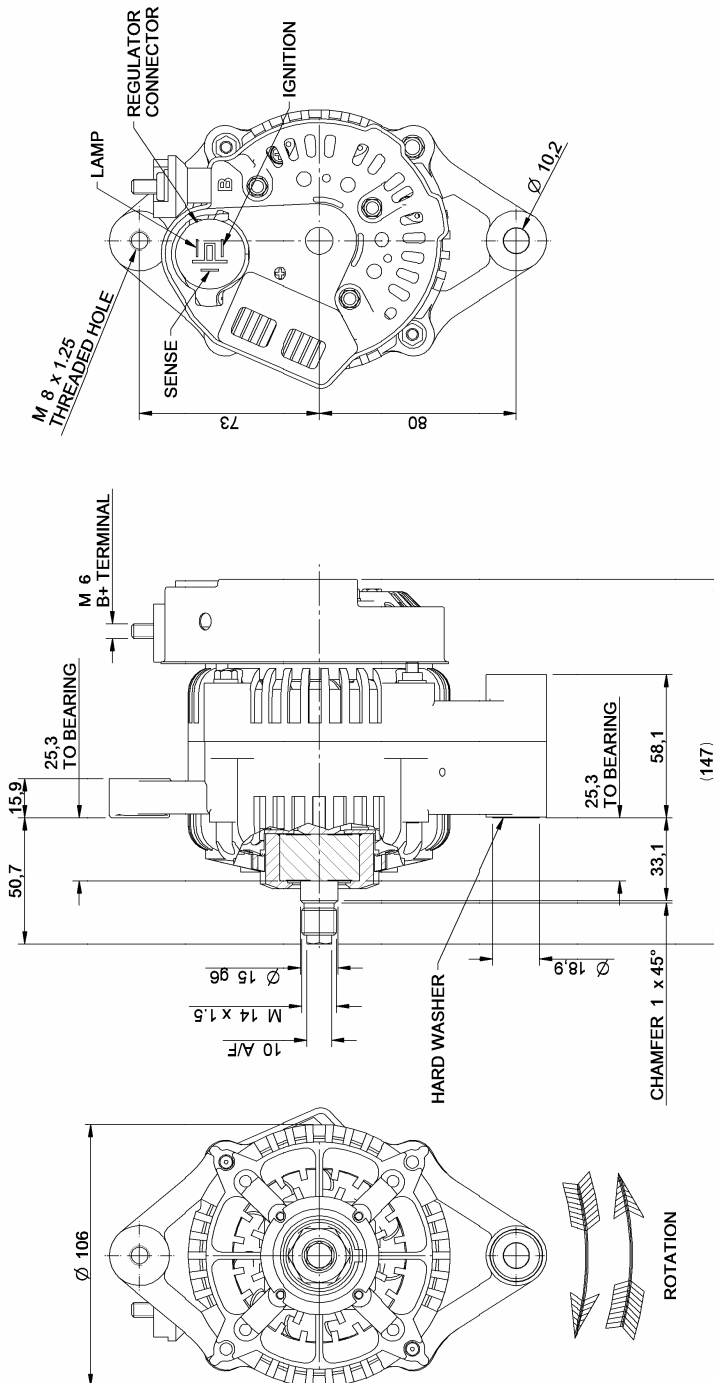


Output in Amps (@13.5V)					
Nominal Current Rating		Standard 55A		High 100A	
Cut in Speed		1200rpm		2100rpm	
Ambient Temperature		25°C	90°C	25°C	90°C
Speed (rpm)	2500	34	31	23	14
	5000	47	42	72	65
	7500	53	46	92	83
	10000	55	50	100	95
	12500	57	53	110	100
	15000	58	55	115	105

McLaren Electronic Systems can service and repair alternators. Please contact our technical consultancy service for more information.

# ALTERNATOR

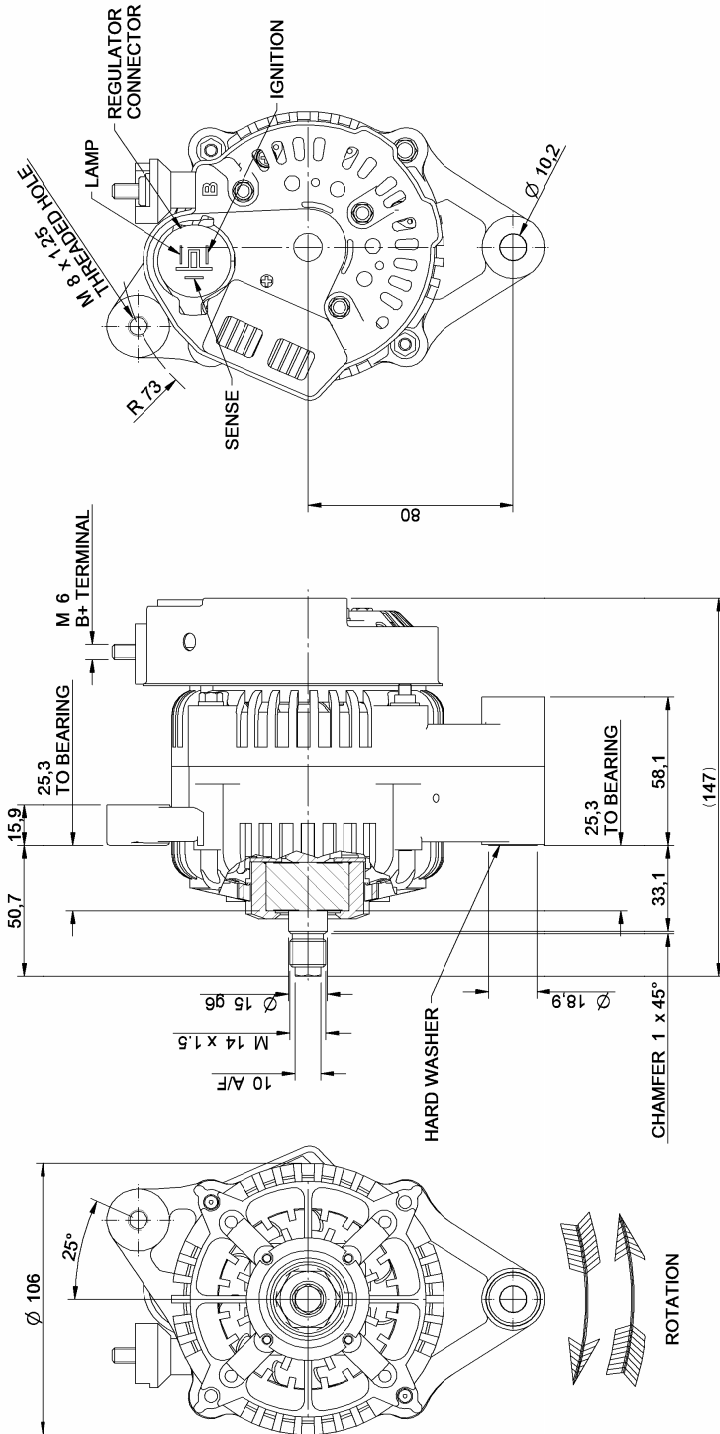
## G TYPE up to 100 Amps



<b>Order Code</b>	O 030 650 005 001 O 030 650 005 002
<b>Connector</b>	1300-4245 1300-4245
<b>Cable Length</b>	N/A (integral connector) N/A (integral connector)
<b>Rotation</b>	Clockwise Counter clockwise
<b>Output</b>	100A 100A

# ALTERNATOR

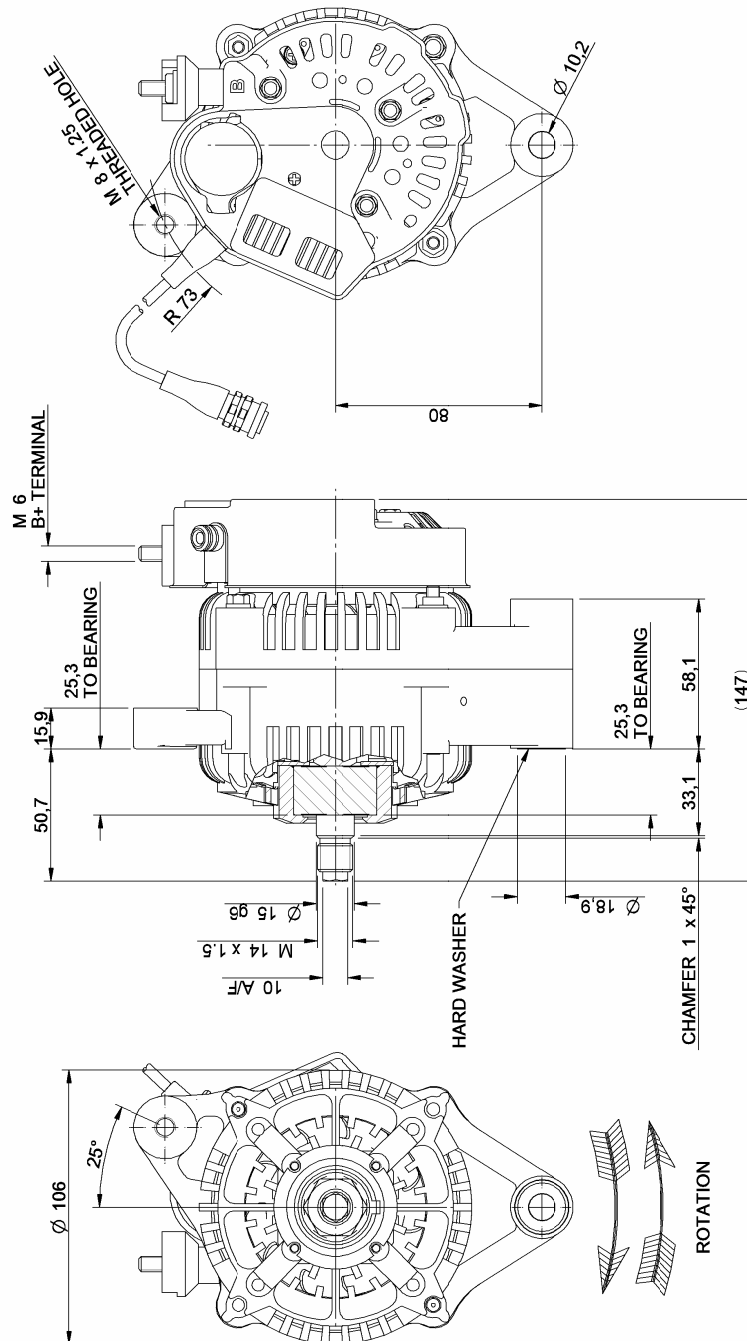
## G TYPE up to 100 Amps



<b>Order Code</b>	O 030 650 005 003 O 030 650 005 004
<b>Connector</b>	1300-4245 1300-4245
<b>Cable Length</b>	N/A (integral connector) N/A (integral connector)
<b>Rotation</b>	Clockwise Counter clockwise
<b>Output</b>	100A 100A

# ALTERNATOR

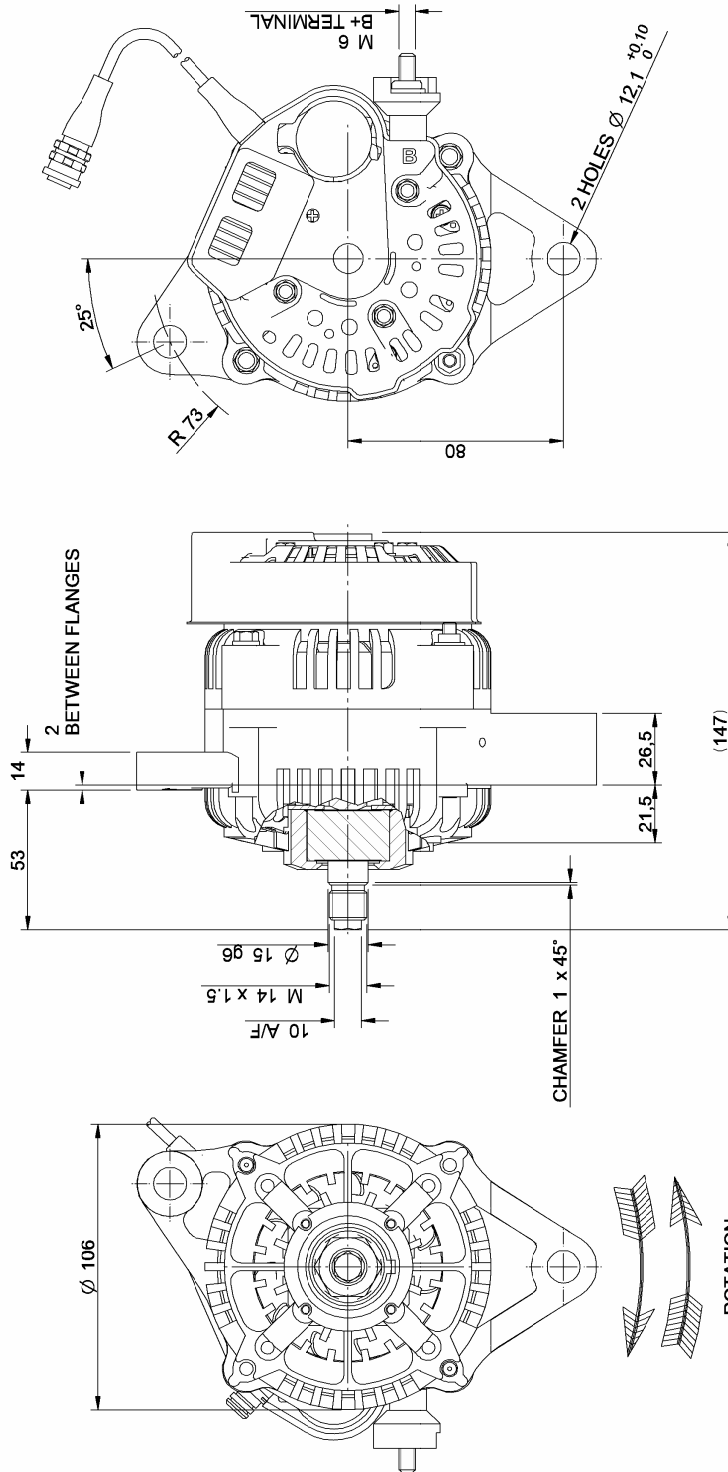
## G TYPE up to 100 Amps



Output	Rotation	Cable Length	Connector	Order Code
100A	Counter Clockwise	300mm	none	O 030 650 005 005
100A	Counter Clockwise	300mm	ASL-6-06-05PN-HE	O 030 650 005 014
100A	Clockwise	300mm	ASL-6-06-05PN-HE	O 030 650 005 012

# ALTERNATOR

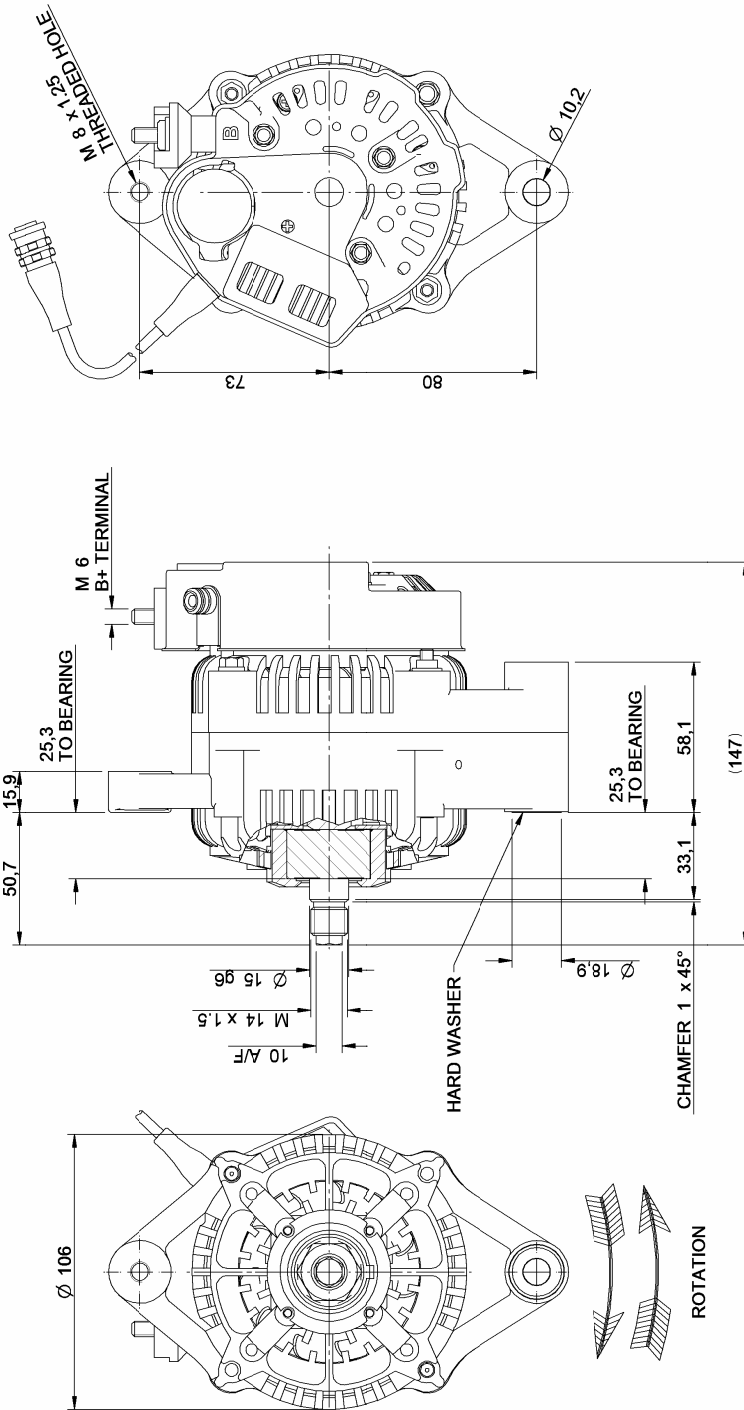
## G TYPE up to 100 Amps



<b>Order Code</b>	O 030 650 005 008
<b>Connector</b>	KPSE 6E8 33S DN
<b>Cable Length</b>	500mm
<b>Rotation</b>	Clockwise
<b>Output</b>	100A

# ALTERNATOR

## G TYPE up to 100 Amps



Output	Rotation	Cable Length	Connector	Order Code
100A	Clockwise	300mm	ASL-6-06-05PN-HE	O 030 650 005 009
100A	Clockwise	300mm	None	O 030 650 005 054
100A	Clockwise	300mm	AS6 8 98PN	O 030 650 005 013
100A	Counter Clockwise	300mm	ASL-6-06-05PN-HE	O 030 650 005 011